



TEB SPECIAL PRODUCTS

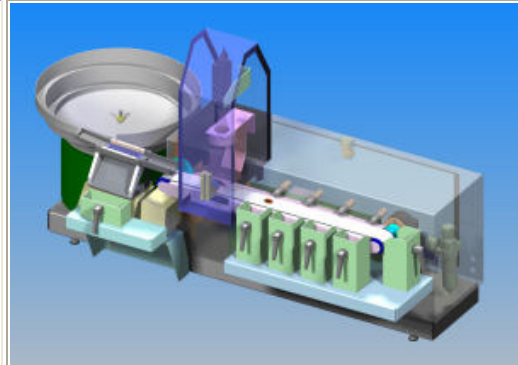
FOR THE INDUSTRY

Function

Automatic grading and inspection of (samples of) cocoa beans.

Specifications

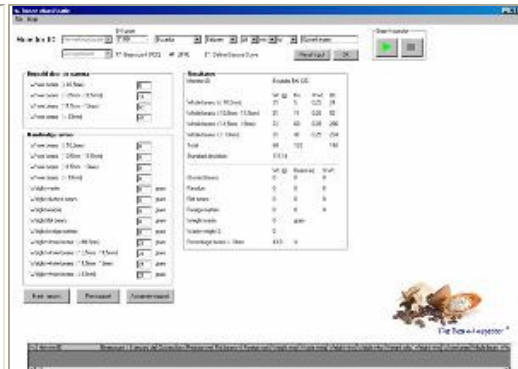
- Capacity: ~ 50 beans/min
- PC based control
- Automatic data collection
- Data storage in local database
- Integration in company network
- Printed report (printer not included)
- Dimensions: 1200 x 500 x 400 mm
- Suitable for use in laboratory conditions



Design view of the **Bean Inspector**



Complete system



Screenshot of the generated report

Description

The **Bean Inspector** was developed in close cooperation with one of the biggest cocoa handling companies in The Netherlands. In order to properly specify the quality of a shipment of cocoa beans, a sample consisting of several hundred beans is taken. This sample is then divided in equal parts, one of which is used for inspection.

With the **Bean Inspector**, the counting and inspection of cocoa beans is carried out by a sophisticated camera system. A sample consisting of approximately 300 beans is automatically divided in fractions:

- whole beans (< 10,5 mm)
- whole beans (10,5 - 11,5 mm)
- whole beans (11,5 - 13 mm)
- whole beans (> 13 mm)

All other fractions (clustered beans, flat beans, foreign matters, residue) are collected separately.

After the input is completed a report is generated with the beancount and statistical data. Also a Gauss curve can be generated based on the inspected beans and the report can be printed out.

Finally, all data is saved in a database in order to provide a historical overview of all samples.

With the **Bean Inspector** the 'human factor' is kept out of the analysis, thus providing an objective way of grading and inspecting samples of cocoa beans.

For more information: www.teb.nl